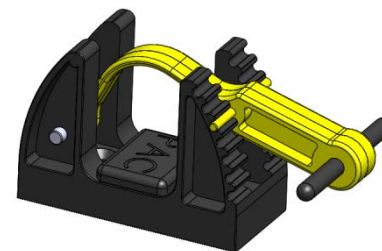


CERTIFICATE OF COMPLIANCE

This is to certify that the **HANDLELOK** as pictured is manufactured to the same specifications as duplicate units proven to be in full compliance with the requirements of all editions of the NFPA 1901 (14.1.11.2). A copy of the test summary is on the reverse side of this certificate.



P/N 1004
HANDLELOK



PERFORMANCE ADVANTAGE COMPANY
10 CENTRAL AVE., LANCASTER, NEW YORK 14086
www.pactoolmounts.com

On the date of 7/10/2000, the Akron Rubber Development Laboratory conducted extensive testing using the latest scientific equipment and procedures and documented complete compliance with all listed 1901 requirements.

[Signature]
Certified

1996 EDITION OF 1901 REQUIREMENTS ARE.....

Chapter 10 Driving and Crew Areas

10-1.7 All equipment required to be used during an emergency response shall be securely fastened. All equipment not required to be used during an emergency response, with the exception of SCBA units, shall not be mounted in the driving or crew area unless it is contained in a fully enclosed and latched compartment capable of containing the contents when a 9-G force is applied in the longitudinal axis of the vehicle or a 3-G force is applied in any other direction, or the equipment is mounted in a bracket(s) that can contain the equipment when the equipment is subjected to those same forces.

Chapter 11 Body, Compartments, and Equipment Mounting

11-3* Equipment Containment. Equipment holders or compartments shall be provided for all tools, equipment, and other items that are on the apparatus. Equipment holders shall be attached firmly and shall be designed so that equipment remains in place under all vehicle operating conditions. All tools and equipment shall be readily accessible.

PERFORMANCE ADVANTAGE CO. COMMENTS:

A TOOL WEIGHING 10 POUNDS, SUBJECTED TO A 9-G FORCE, GENERATES 10 POUNDS X 9 OR 90 POUNDS OF FORCE THAT MUST BE RESTRAINED BY THE TOOL MOUNTING BRACKET.

PAC CERTIFIES COMPLIANCE WITH THE 9-G REQUIREMENTS FOR THE FOLLOWING MAXIMUM TOOL WEIGHTS:

P/N	MOUNTING NAME	RATED CAPACITY PER MOUNT
1003	TOOLOK	4 POUNDS
1004-2	HANDLELOK	10 POUNDS
K3003	IRONSLOK	19 POUNDS
7000	PAC TRAC	10 POUNDS PER MOUNT
7001	Z MOUNT	10 POUNDS PER MOUNT
7002	TRAC LOK INSERTS	10 POUNDS PER MOUNT

PAC ALWAYS FURNISHES THE CORRECT FASTENERS. IF IT IS TO BE MOUNTED ON PAC TRAC, #10-24 STAINLESS STEEL BOLTS AND TRAC LOK INSERTS ARE PROVIDED. IF NOT, STAINLESS STEEL NUTS AND BOLTS ARE FURNISHED. THAT IS WHY IT IS VERY IMPORTANT TO SPECIFY HOW YOU ARE MOUNTING THE BRACKETS.

WHEN MOUNTED ON PAC TRAC, USING TRAC LOK INSERTS, TOOLOK REQUIRES A MINIMUM OF 10 INCH POUNDS OF TIGHTENING FORCE AND HANDLELOK 15 INCH POUNDS. NEVER EXCEED 20 INCH POUNDS OF TORQUE.

TEST CONDITIONS

BRACKETS WERE "AGED" AT 125° (52° C) FOR 168 HOURS IN AN OVEN WHICH WAS A SIMULATION OF AN AGING OF FIVE YEARS UNDER NORMAL CONDITIONS.

TENSILE STRENGTH TESTS WERE CONDUCTED AT: -20° F (-29° C), 70° F (21° C) AND 125° F (52° C). RESULTS SHOWED STIFFNESS INCREASING AT THE LOWEST TEMPERATURES AND REDUCED AT THE HIGHEST; HOWEVER, TENSILE STRENGTH FOR 9-G TESTS WERE PASSED AT ALL TEMPERATURES.

TESTS WERE ALSO DONE WHERE CONDITIONS SIMULATED FIVE YEARS OF ROUGH SERVICE. A HIGH-IMPACT VIBRATION DURABILITY TEST WAS GIVEN WHICH SIMULATED FIVE YEARS OF AGING UNDER NORMAL OPERATING CONDITIONS. NO LOSS OF PERFORMANCE WAS DETECTED.

THIRD PARTY RESPONSIBILITY

1. IT IS UP TO PAC TO PROVIDE MOUNTING SYSTEMS DESIGNED TO MEET THE REQUIREMENTS OF THE FIRE AND RESCUE SERVICE.
2. IT IS UP TO THE INSTALLER OF PAC PRODUCTS TO DO SO RECOGNIZING THE FORCES THAT CAN BE GENERATED DURING A SUDDEN IMPACT.
3. IT IS UP TO THE USER TO BE CERTAIN THAT THE BRACKETS ARE PROPERLY MAINTAINED AND PROPERLY USED. TOOLS SHOULD BE FIRMLY LOCKED IN POSITION WITH ALL LOCKING PINS PROPERLY LINED UP.