



## PRODUCT DATA SHEET

P/N: **3014**

# STEEL CHANNEL NUTS (1pk)

Channel Nuts hold brackets to our PAC Trac and Dual Trac extrusions. These inserts lock in the tracks when the screw is tightened. Loosen the screws and the Channel Nuts can be moved or removed.

### TYPICAL SPECIFICATION

- Dual Trac(s) and Pac Strut 2019
- Thread size: 1/4-20
- Material: Stainless Steel

### FEATURES

- Durable, non-corrosive inserts
- Install easily
- Remove, reuse, reposition easily
- Package includes: (1) #3014

### SPECIFICATIONS

P/N	WT.	MAX LOAD	GRIP RANGE	HANGER RANGE	FLAME TOXICITY CHEMICAL
3014	N/A	N/A	N/A	N/A	N/A

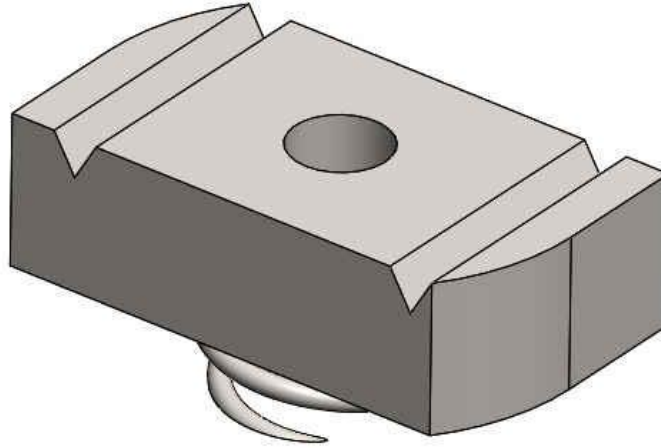
Performance Advantage Company

Lancaster, New York

[www.pactoolmounts.com](http://www.pactoolmounts.com)

888-514-0083

REFERENCE	QTY	REMARKS	PROJECT
			LOCATION
			BUYER
			DEALER
			BUILDER
			SUBMITTED BY: DATE:



**Channel Nuts hold brackets to our PAC Trac and Dual Trac extrusions. These inserts lock in the tracks when the screw is tightened. Loosen the screws and the Channel Nuts can be moved or removed.**

- Durable, non-corrosive inserts
- Install easily
- Remove, reuse, reposition easily
- Package includes: (1) #3014