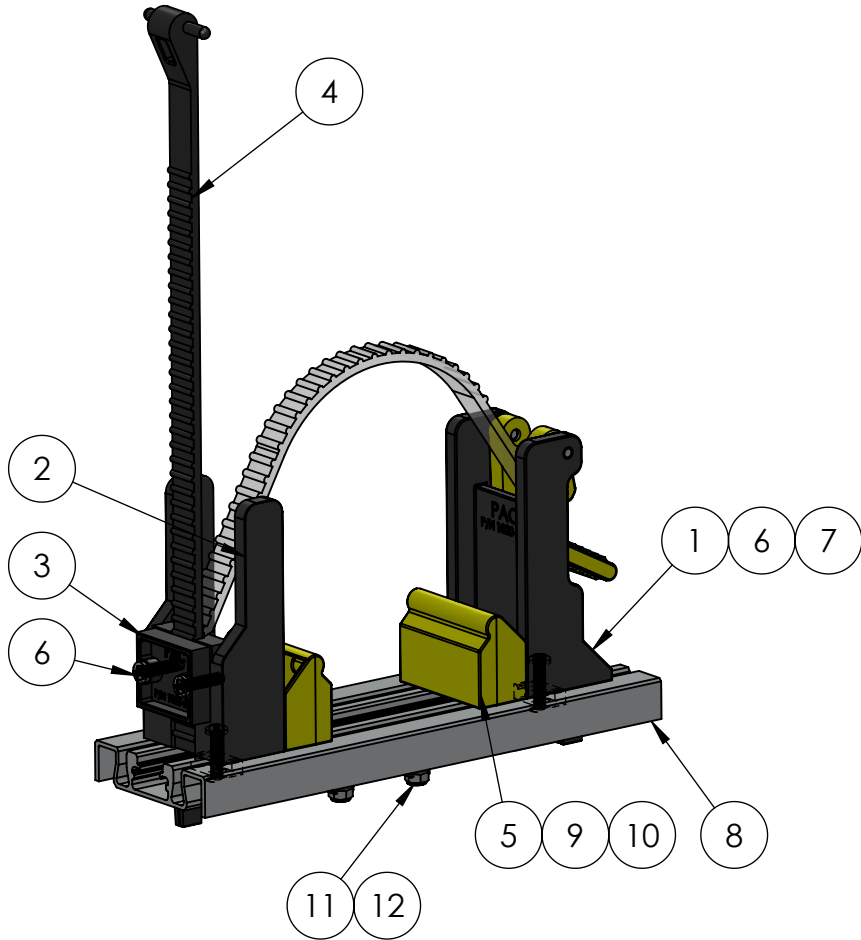


REV	DESCRIPTION	DATE	APPR



12	7003	HARDWARE KIT	1
11	7048	FASTENER KIT	1
10	2046	PAN HEAD SCREW	4
9	7016	TRAC LOK INSERT	4
8	7050P-12	MINI DUAL TRAC 12" LONG	1
7	2023	1/4-20 CHANNEL NUT	2
6	3017	14-20 X 1 PHIL PANHEAD	4
5	1020-206	WEDGE BLOCK	2
4	1020-205	FAST LOK STRAP	1
3	1020-202	CLAMP BLOCK	1
2	1020-201	CLAMP MODULE	1
1	1020-901	LOCK END ASSEMBLY	1
ITEM NO.	PAC P/N	PART NAME	QTY

**NOTES:**

OTHER VERSIONS:  
P/N K5020-OR (ORANGE STRAP)  
P/N K5020-Y (YELLOW STRAP)

**P**ERFORMANCE  
**A**DVANTAGE  
**C**OMPANY



**TOLERANCES UNLESS OTHERWISE SPECIFIED**

.X= ±.03  
.XX= ±.010  
.XXX= ±.005  
.XXXX= ±0.0005  
ANGLES ±0.5 °  
FRACTIONAL ±1/64

THIRD ANGLE PROJECTION



COLOR

NAME DATE

DRAWN BY

APPR. BY

MFG BY

MFG. P/N

ENG APPR.

MATERIAL

ALT. MATERIAL

FINISH

THE INFORMATION CONTAINED IN THIS DRAWING IS THE SOLE PROPERTY OF PERFORMANCE ADVANTAGE CO. ANY REPRODUCTION IN PART OR AS A WHOLE WITHOUT THE WRITTEN PERMISSION OF PERFORMANCE ADVANTAGE CO. IS PROHIBITED.

**TITLE:**

**FAST LOK KIT**

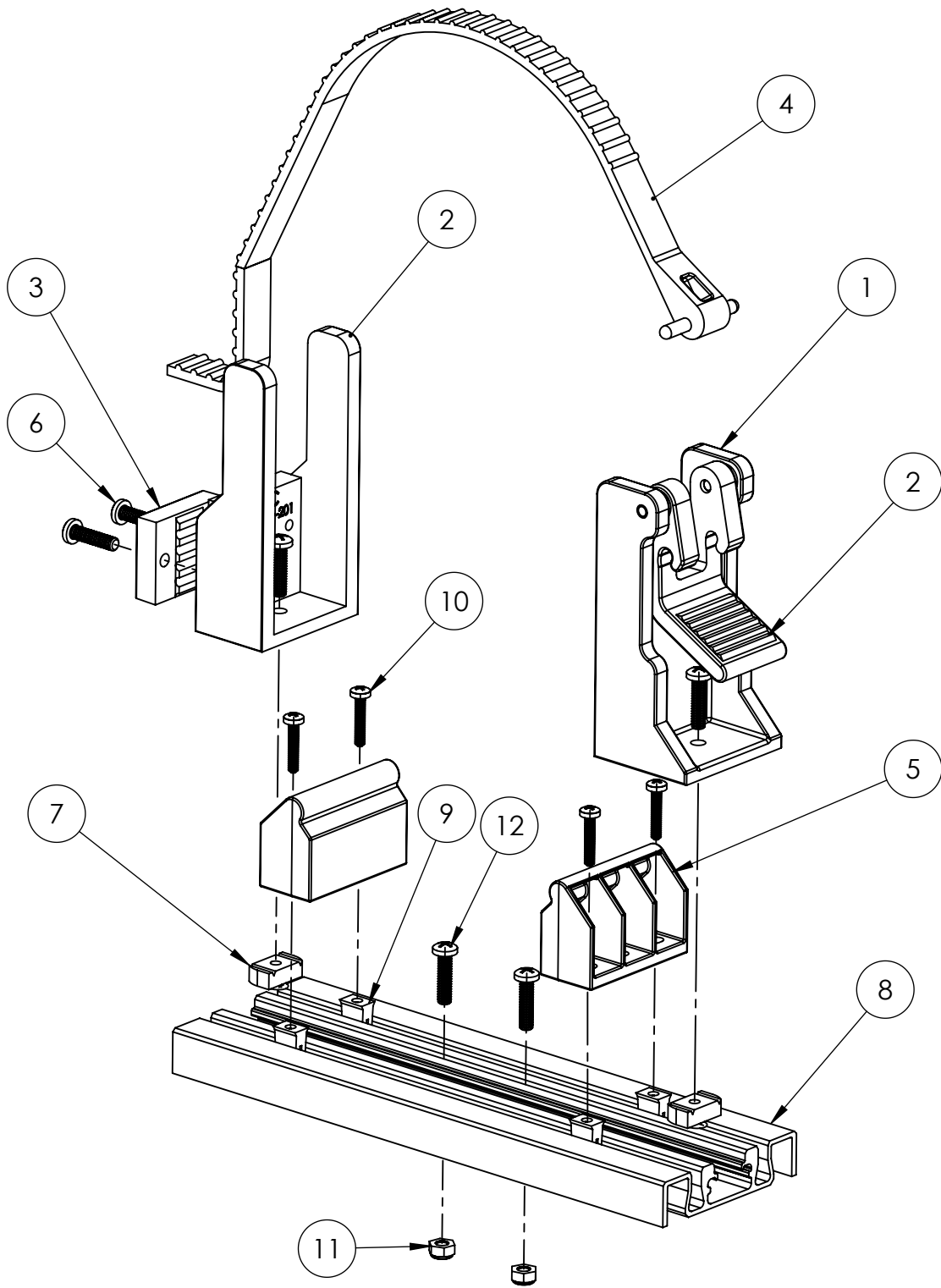
**PART NUMBER**

**K5020**

REV

**SCALE: 1:4**

**SHEET 1 OF 2**



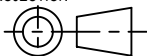
**PERFORMANCE  
ADVANTAGE  
COMPANY**



TOLERANCES UNLESS OTHERWISE SPECIFIED

.X = ±.03  
.XX = ±.010  
.XXX = ±.005  
.XXXX = ±0.0005  
ANGLES ±0.5°  
FRACTIONAL ±1/64

THIRD ANGLE PROJECTION



COLOR

DRAWN BY

APPR. BY

MFG BY

MFG. P/N

ENG APPR.

MATERIAL

ALT. MATERIAL

FINISH

NAME

DATE

THE INFORMATION CONTAINED IN THIS DRAWING IS THE SOLE PROPERTY OF PERFORMANCE ADVANTAGE CO. ANY REPRODUCTION IN PART OR AS A WHOLE WITHOUT THE WRITTEN PERMISSION OF PERFORMANCE ADVANTAGE CO. IS PROHIBITED.

TITLE:

**FAST LOK KIT**

PART NUMBER

**K5020**

REV

SCALE: 1:4

SHEET 2 OF 2