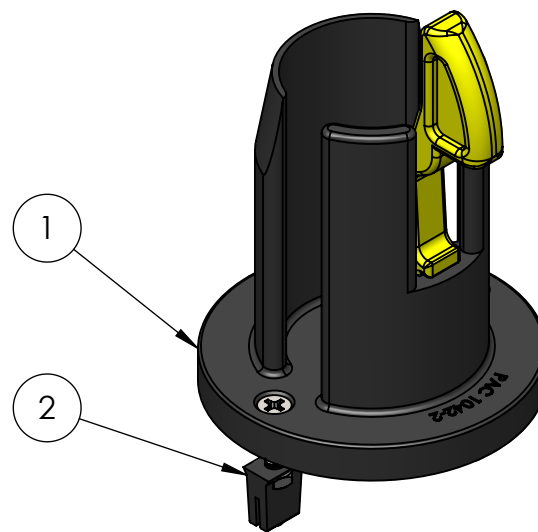
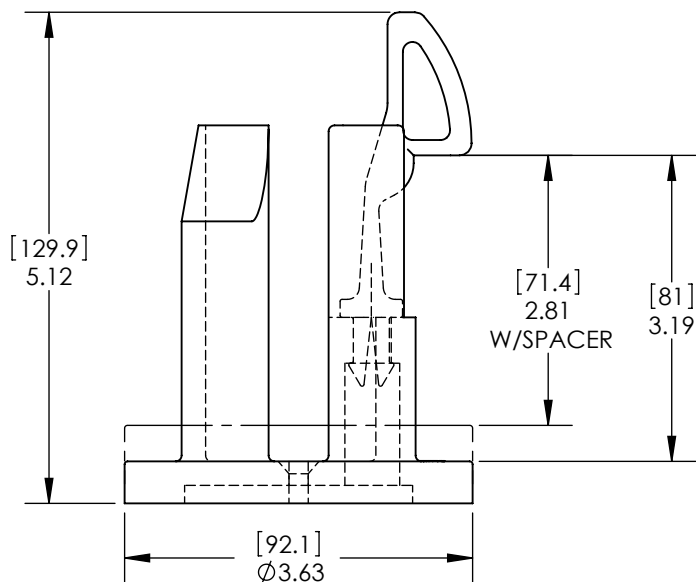
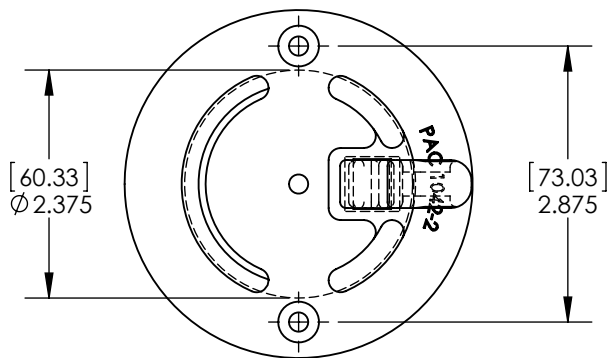


REV	DESCRIPTION	DATE	APPR



ITEM NO.	PAC P/N	PART NAME	QTY
2	7046	FASTENER PACK	1
1	1042-2P	ADAPTER LOK 2-1/2"	1

NOTES:

PERFORMANCE
ADVANTAGE
COMPANY



TOLERANCES UNLESS OTHERWISE SPECIFIED

.X= ± .03
.XX= ± .010
.XXX= ± .005
.XXXX= ± 0.0005
ANGLES ± 0.5 °
FRACTIONAL ± 1/64

THIRD ANGLE PROJECTION



COLOR
BLACK

NAME	DATE
DRAWN BY JIM GONZALEZ	3/9/2010
APPR. BY JIM GONZALEZ	3/9/2010
MFG BY	
MFG. P/N	
ENG APPR.	
MATERIAL	
ALT. MATERIAL	
FINISH	

THE INFORMATION CONTAINED IN THIS DRAWING IS THE SOLE PROPERTY OF PERFORMANCE ADVANTAGE CO. ANY REPRODUCTION IN PART OR AS A WHOLE WITHOUT THE WRITTEN PERMISSION OF PERFORMANCE ADVANTAGE CO. IS PROHIBITED.

TITLE:

ADAPTER LOK

PART NUMBER

1042-2

REV

SCALE: 1:2

SHEET 1 OF 2